



Farm Machinery Testing and Training Centre
Department of Farm Power and Machinery
College of Agricultural Engineering and Technology
Dr. PANJABRAO DESHMUKH KRISHI VIDYAPEETH
AKOLA- 444 104 (MS)
Email: fmtt28@gmail.com



SPECIFICATION SHEET OF TRACTOR OPERATED AIR ASSISTED SPRAYER

1	General			
	Name and address of manufacturer	:		
	Name and address of applicant	:		
	Name of machine	:		
	Type	:		
	Make	:		
	Model	:		
	Batch No/Code No.	:		
	Capacity of Sprayer, l	:		
	Serial No	:		
	Recommended working pressure, kg/cm ²	:		
	Output capacity, l/min	:		
	Year of Manufacture	:		
	Optional connection	:		
	Mass, kg.	:		
2	Recommended Source of Power		:	
	Prime More Used, kW		:	
2.1	Propeller shaft			
	Type	:		
	Length of shaft, mm			
	Maximum	:		

Minimum		:	
Mass of shaft, Kg		:	
Provision of locking		:	
Hub Dimension, mm Refer fig.1 As per IS 4931:1995, mm			
Notation	As per IS:4931:1995, mm	As observed, mm	Remarks
Dφ	34.93 ± 0.03		
dφ	29.7 ± 0.7		
W	8.69 (Min)		
B	--		

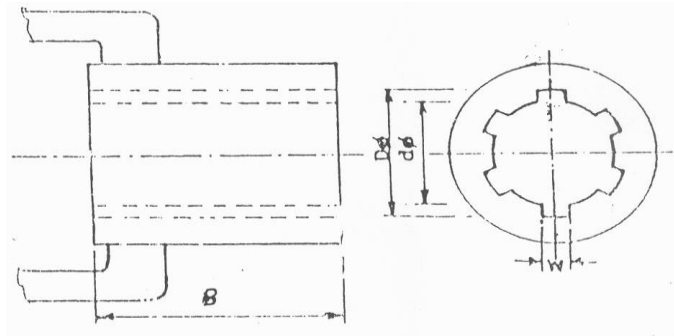


Fig 1 Hub dimensions

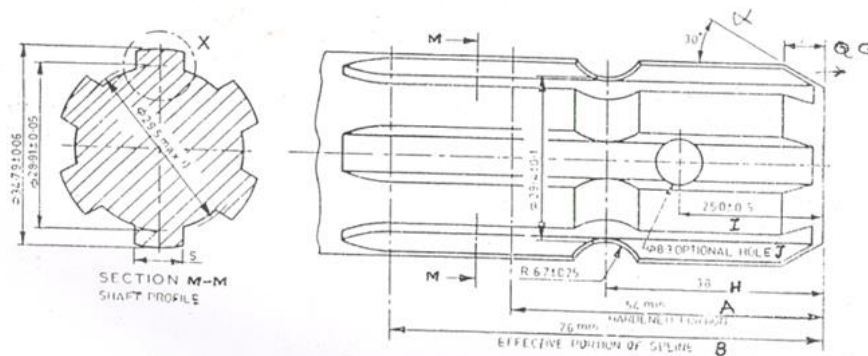


Fig 2 Dimensions of splined end of pinion shaft, mm

Specification	As per IS: 4931-2004	As observed, mm	Remarks
1	2	3	4
D ϕ	34.79 \pm 0.06		
d ϕ	28.91 \pm 0.05		

	B ϕ	29.4 \pm 0.1		
	S	8.69		
	R	6.7 \pm 0.25		
	α	30°		
	G	7		
	H	38		
	A	54 (Min.)		
	B	76 (Min.)		
	I	25 \pm 0.5		
	J (optional hole)	8.3		
3	Pump Description			
	Make of pump	:		
	Type	:		
	No. of Plunger	:		
	Recommend pump speed for spraying, rpm	:		
	Suction Volume, l/min	:		
	Rated pressure for spraying, Kg/cm ²	:		
	Pump, kW	:		
4	Nozzle	:		
	Make	:		
	Type	:		
	Designation	:		
	Recommended operating pressure, Kg/cm2	:		
	Recommended discharge rate, ml/min (for cone spray & jet spray)			
	Recommended cone angle at 3kg/cm ² pressure, degree	:		
	Arrangement of nozzle	:		
	No. of nozzles	:		
5	Tank			
	Shape	:		
	Size, mm (L x B x H)	:		

	Capacity, l	:			
	Material	:			
	Method of Mounting	:			
6	Main Frame				
	Type	:			
	Size, mm (Length X Width)	:			
7	Transport wheel				
	Nos. of Wheel	:			
	Tyre size with ply rating	:			
	Track with, mm	:			
	Ground clearance, mm	:			
8	Axle				
	Material	:			
	Length, mm	:			
	Size, mm	:			
9	Drawbar hitch				
	Material	:			
	Size, mm (L x B x T)	:			
9.1	Eye Bolt				
	Material	:			
	Diameter, mm	:			
10	Mounting arrangement				
10.1	Three point linkage, (Fig. 3)				
	Type				
	Sr. No.	Notations	As per IS: 17231:2019 (1N, 1, /2N, 2), mm	As measured, mm	Remarks
	I	Upper hitch point			
	D ₁	Diameter of hitch pin	19 (0-0.08)/ 25.5 (0-0.13)		
	b ₁	Width between inner faces of yoke	52 (Min.)		
	II	Lower hitch points			
	D ₂	Diameter of hitch pin	22 (0-0.2)/ 28 (0-0.2)		

b_3	Linch pin hole distance	49 (Min.)		
b_5	Clevis width	65+20		
l	Lower hitch point span	400±1.5, 683±1.5, 683±1.5, 825±1.5		
III	Other dimensions			
d	Diameter for linch pin hole			
	Upper hitch pin	12 (min.)		
	Lower hitch pin	12 (min.)		
h	Mast height	360±1.5 460±1.5 610±1.5 610±1.5		

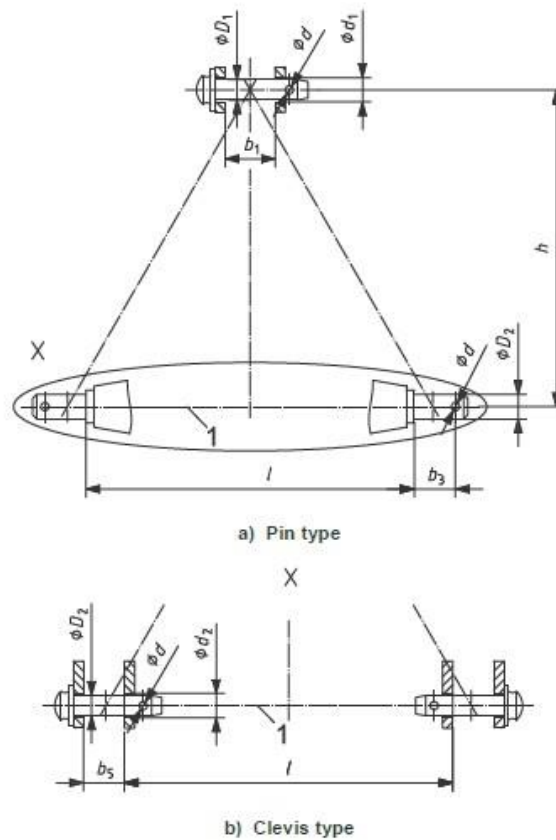


Fig 1 Dimensions related to implement hitch attachment

11	Parking stand		
	Type	:	
	Material	:	
	Size, mm	:	
	No of stand	:	
	Arrangement	:	
12	Agitation Device		
	Make	:	
	Type	:	
	Nos. of agitation device	:	
13	Fan description		
	Type of fan	:	
	Material	:	
	Size of fan, mm	:	
	No of blades	:	
	Safety guard	:	
14	Gear box details		
	Ratio of gear box		
	No of teeth on 1st gear	:	
	No of teeth on 2nd gear	:	
	Ratio	:	
	No of teeth on 3rd gear	:	
	No of teeth on 4th gear	:	
	Ratio	:	
	Safety guard	:	
15	Filter		
	Mesh	:	
	Size, mm	:	
	Arrangement	:	
16	Accessories		

	For operator's safety against pesticides	:	
	Tool kit	:	
17	Overall dimensions (L x B x H), mm		
	Colour	:	
18	Mass with all accessories and without fuel and chemicals, kg	:	
19	Mass with all accessories, fuel and chemicals tank, kg	:	
20	Application/Area of Use	:	
21	Marketing/Labelling	:	
	Sr. no.	Parameters	:
	1	Make	:
	2	Model	:
	3	Sr No	:
	4	Tractor power required	:
	5	Year of manufacture	:
	7	Name and address of manufacturer	:

Place:

Date:

Signature:_____

Name:_____

Designation:_____