



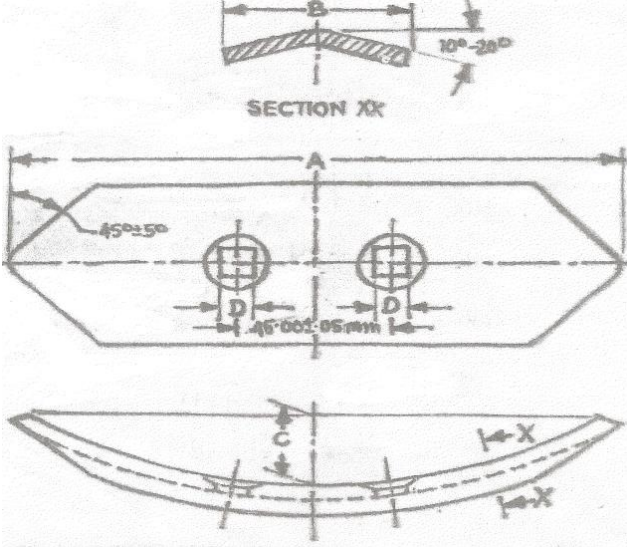
Farm Machinery Testing and Training Centre
Department of Farm Machinery and Power
College of Agricultural Engineering and Technology
DR. PANJABRAO DESHMUKH KRISHI VIDYAPEETH
AKOLA- 444 104 (MS)



E-mail: fmtt28@gmail.com

SPECIFICATION SHEET OF BBF PLANTER CUM INTER ROW CULTIVATOR

1	GENERAL:		
	a) Name and address of the applicant	:	
	b) Type	:	
	c) Make	:	
	d) Serial	:	
	e) Model	:	
	f) Year of manufacture	:	
	g) Different seeds which the Planter is designed to Plant.	:	
	h) Source of power	:	
	i) Recommended travelling speed of the BBF Planter cum Inter Row Cultivator	:	
j) Recommended power of tractor (if tractor operated)	:		
2	FURROW OPENER		
	a) Type	:	
	b) Type and tilt angle with respect to vertical	:	

c) No. of openers	:	
d) Arrangement of opener	:	
 <p>Fig.2 Furrow opener</p>		

3 Specification of furrow opener as per IS 6813: 2000 (Reaffirmed 2004) (Ref. Fig. 2)

Sr. No.	Notation	Dimension (mm)		Conformity to Indian standard
		As per IS : 6813	As observed	
1.	A	180±2		
2.	B	45±2		
3.	C	30±1		
4.	D	11.5±0.5		
5.	E	45±0.5		
6.	α	45±5		
7.	β	10 to 20		
3.1	Wing span adjustment braces:			
	No of braces	:		

	Size of brace	:	
	Wing span adjustment	:	
	No of holes, hole to hole distance	:	
	Method of fixing	:	
4	METERING MECHANISM:		
	1) Seed metering device:		
	a) Type	:	
	b) Size of feed shaft (mm)	:	
	c) No of holes	:	
	d) Source of power	:	
	e) Transmission ratio of shaft of seed metering device to land wheel	:	
	f) Type of agitator	:	
	h) Method of feed rate control for different size of seeds	:	
	g) Provision for closing seed discharge.	:	
	h) Fertilizer distributor	:	
5	HOPPER:		
	a) Capacity (Kg)		
	1) Seed box	:	
	2) Fertilizer box	:	
	b) Type of seed hoppers	:	

	c) Type of fertilizer hoppers	:		
6	MARKER DETAILS:	:		
7	SEED COVERING ARRANGEMENT	:		
8	TYPE OF HITCH AND ITS DETAILS:			
	Type	:		
		:		
Specification of Hitch Pyramid As per IS: 4468 -1997: -				
S No.	Notation Specifications	Dimension (mm)		Remark
		As per IS	As measured	
1	Upper Hitch Points -			
	Diameter of hitch pin hole	25.70-25.90		
	Width between inner surfaces of yoke	52.0 (Min)		
	Width between outer surfaces of yoke	86 (Max)		
2	Lower Hitch point:			
	Diameter of hitch pin	27.80 – 28.0		
	Diameter of hitch pin hole	28.7 – 29.0		
	Lower hitch point span	825 ±1.5		
3	Mast height	610±1.5		

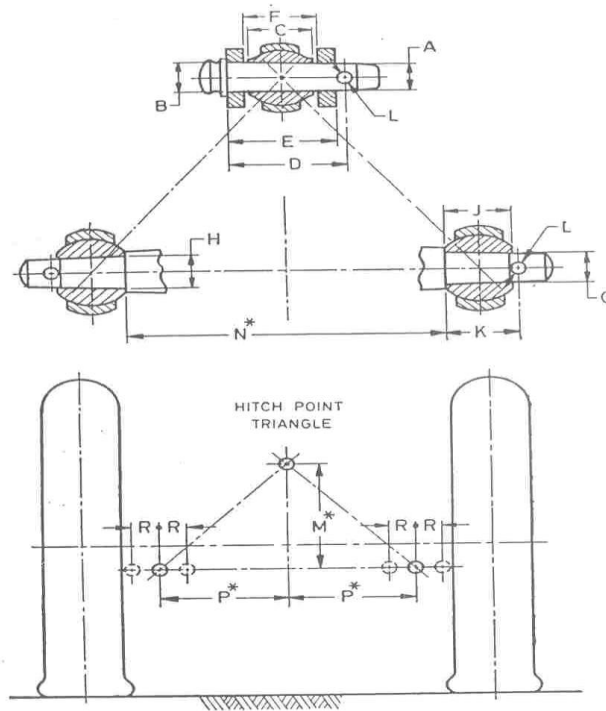


FIG. 1. DIMENSIONS OF HITCH POINTS

Fig. 4 Specifications of the hitch pyramid

9

GROUND DRIVE DETAILS:

a) No. of wheels	:	
b) Type of wheel	:	
c) Size (mm)	:	
d) No. of lugs	:	
e) Method of transmitting power to feed shafts	:	

10	DETAILS OF ADJUSTMENTS:		
Sr. No.	Adjustments	:	Method
1	Feed rate	:	
2	Spacing of furrow openers	:	
3	Depth of sowing	:	
5	Reduction ratio of drive mechanism	:	
11	DETAILS OF SAFETY ARRANGEMENT FOR ROTATING PARTS	:	
12	NUMBER OF GREASING POINTS	:	
13	INTER ROW CUTIVATOR ATTACHMENT		
13.1	Tyne		
	No of tynes	:	
	Type	:	
	Material	:	
	Full sweep fixed tyne		
	Dimensions (Lx W x T), mm	:	
	Half sweep fixed tine		
	Dimensions (Lx W x T), mm	:	
	Arrangement on main frame	:	

13.2	Sweep	
	Full Sweep	
No of full sweep	:	
Type	:	
Material	:	
Thickness	:	
Half Sweep		
No of half sweep	:	
Type	:	
Material	:	
Thickness	:	
Method of fixing	:	
14	OVERALL DIMENSIONS (mm):	
a) Length X Width X Height	:	
d) Weight of seed cum fertilizer drill	:	
e) Weight with seeds and fertilizers (kg)	:	

15	DETAILS OF MATERIAL OF CONSTRUCTION:			
	Sr. No.	Name of part	Material	Section or size
	1	Feed shafts		
	2	Seed and fertilizer box		
	3	Tyne		
	5	Seed tube		
	6	fertilizer tube		
	7	Covering device		

Place:

Date:

Signature : _____

Name : _____

Designation: _____