



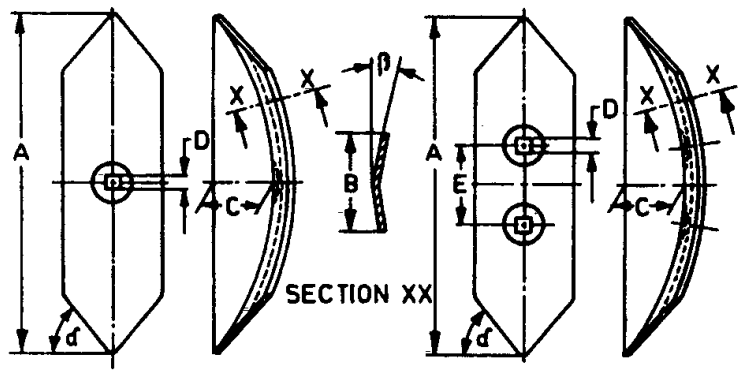
Farm Machinery Testing and Training Centre
Department of Farm Power and Machinery
College of Agricultural Engineering and Technology
Dr. PANJABRAO DESHMUKH KRISHI VIDYAPEETH
AKOLA- 444 104 (MS)



E-mail: fmtt28@gmail.com

SPECIFICATION SHEET OF TRACTOR DRAWN SEED CUM FERTILIZER DRILL

1	General		
	Name and address of the manufacturer	:	
	Name and address of the applicant	:	
	Name	:	
	Type	:	
	Make	:	
	Serial	:	
	Model	:	
	Year of manufacture	:	
	Different seeds which the drill is designed to sow.	:	
	Recommended power source	:	
	Min. power required, kW	:	
	Recommended travelling speed of the drill	:	
	Recommended power of tractor (if tractor operated)	:	
Location of fertilizer outlet in relation to seed outlet.	:		

2	Furrow openers				
	 <p style="text-align: center;">Fig.1 Furrow openers (As per IS6813:2000)</p>				
Type		:		Specification of shovel as per IS: 6813: 2000	
Sr. No	Notation	As per IS, mm	As observed, mm	Conformity to IS	
1	A	150± 2 or 170± 2 or 180 ± 2			
2	B	35± 2 or 45± 2			
3	C	25± 1 or 30 ±1			
4	D	11.5 ± 0.5			
5	E	45 ± 0.5			
6	α	45 ± 5, degree			
7	β	10-20			
Type and tilt angle with respect to vertical			:		
No. of openers			:		
Arrangement of openers			:		
Range if selection of openers			:		
Method of changing row space and range			:		
Nominal width, cm			:		
Lifting and lowering of openers			:		

	Depth control	:	
	Fertilizer placement with respect to seeds.	:	
3	Metering mechanism		
	Seed metering device:		
	Type	:	
	Size of feed shaft, mm	:	
	Size (dia. mm) and number of fluted rollers	:	
	Source of power (ground wheel or other)	:	
	Transmission ratio of shaft of seed metering device to land wheel axle	:	
	Type of agitator	:	
	Method of feed rate control for different sizes of seeds	:	
	Provision for closing seed discharge.	:	
	Fertilizer distributor	:	
4	Hopper		
	Capacity, kg	:	
	1) Seed box	:	
	2) Fertilizer box	:	
	b) Type of seed hoppers	:	
	c) Type of fertilizer hoppers	:	
5	Marker details:	:	
6	Seed covering arrangement	:	

7	Type of hitch and its details				
	Type	:			
	Specification of Hitch Pyramid As per IS: 4468 -1997:				
	Three Point linkage-(Refer Fig No. 2)				
	Sr. No.	Notation	As per IS:4468-2001 (Cat-I/Cat-II)	As measured	Remarks
	I	Upper hitch point			
	a)	Diameter of hitch pin (A)	18.92 to 19.00/ 25.37 to 25.50		
	b)	Diameter of hitch pin hole (B)	19.30 to 19.50/ 25.70 to 25.91		
	c)	Linch pin hole distance (D)	76.00 (Min.)/ 93.00 (Min.)		
	d)	Width between outer faces of yoke (E)	44.50 (Min.)/ 52.00 (Min.)		
	e)	Width inner faces of yoke (F)	69 (Max.)/ 86 (Max.)		
	II	Lower hitch points			
	a)	Diameter of hitch pin	21.8 to 22.00/ 27.8 to 28.00		
	b)	Diameter of hitch pin hole (H)	22.4 to 22.65/ 28.7 to 29.00		
	c)	Linch pin hole distance (K)	39.00 (Min.)/ 49.00 (Min.)		
	III	Dia. of linch pin hole			
	a)	Upper hitch pin (L)	12.00 (Min)		
	b)	Lower hitch pin (L)	12.00 (Min)		
	IV	Mast height	458.5 to 461.5/ 608.5 to 611.5		
V	Lower hitch point spans (N)	681.5 to 684.5/ 823.5 to 826.5			

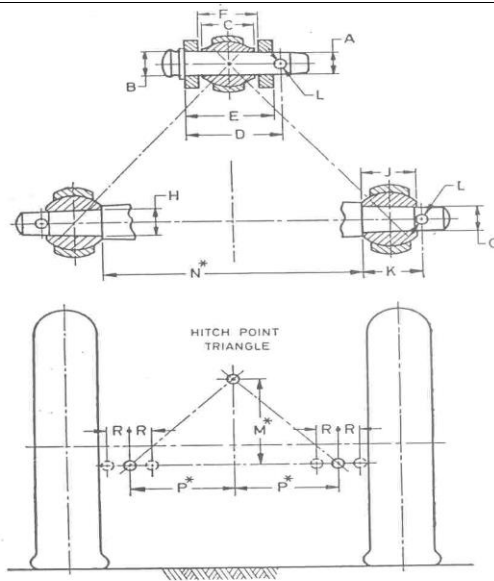


Fig. 2 Specifications of the hitch pyramid

8	Ground drive details			
	No. of wheels	:		
	Type of wheel	:		
	Size, mm	:		
	No. of lugs	:		
	Method of transmitting power to feed shafts	:		
9	Details of adjustments			
	Sr. No.	Adjustments	:	Method
	1	Feed rate	:	
	2	Spacing of furrow openers	:	
	3	Depth of sowing	:	
	4	Height of covering device	:	
	5	Reduction ratio of drive mechanism	:	
10	Details of safety arrangement for rotating parts			

11	Overall dimensions (L x B x H), mm	:		
	Weight with seeds and fertilizers, kg	:		
12	Number of greasing points	:		
13	Details of material of construction			
	Sr. No.	Name of part	Material	Section or size
	1	Feed shafts	MS	
	2	Seed and fertilizer box	MS	
	3	Tyne	MS	
	4	Boot	MS	
	5	Seed tube	Nylon plastic	
	6	fertilizer tube	Nylon plastic	
	7	Covering device	MS	

Place:

Date:

Signature : _____

Name : _____

Designation: _____