



Farm Machinery Testing and Training Centre
Department of Farm Machinery and Power
College of Agricultural Engineering and Technology
DR. PANJABRAO DESHMUKH KRISHI VIDYAPEETH
AKOLA- 444 104 (MS)



E-mail: fmtt28@gmail.com

SPECIFICATION SHEET OF SUBSOILER

1.0	General	
	Name	
	Address of Manufacturer	
	Name & Address of Applicant	
2.0	Technical Specifications	
	Type	
	Make	
	Serial Number	
	Model	
	Year of manufacture	
	No. of plough bottom(s)	
	Size of plough (mm)	
	Source of power	
3.0	Constructional Details	
3.1	Main frame:	
a)	Constructional details	
b)	Size (mm)	
3.2	Standard	
a)	Numbers	
b)	Material	
c)	Type	
d)	Dimensions (mm)	
	- Projected length	

	- Curved length	
	- Width	
	- Thickness	
e)	No., size and spacing of hole on each standard for fixing share to it (mm)	
f)	No. and size of bolts for tightening share to the standard (mm)	
g)	Method of fixing	
h)	Provision of height adjustments	
3.3	Share:	
a)	Numbers	
b)	Type	
c)	Dimensions (mm)	
d)	No., size and spacing of hole on each share for fixing it to standard (mm)	
e)	Method of fixing share to the standard	
3.4	Types of hitch and its details:	
a)	Type	
b)	Constructional details	

Sr.	Dimension	Description (Refer Fig.)	Dimension in mm
Upper Hitch attachments			
1	d_1	Diameter of hitch pin hole	
2	b'_1	Width between inner faces of yoke	
3	b'_2	Width between outer faces of yoke	
Lower hitch points			
4	D_2	Dia of hitch pin	
5	b'_3	Linch pin hole distance	
6	l	Lower hitch point span	

Other dimensions		
	Diameter of lynch pin hole	
7	d	For upper hitch pin
8		For lower hitch pin
9	h	Mast height

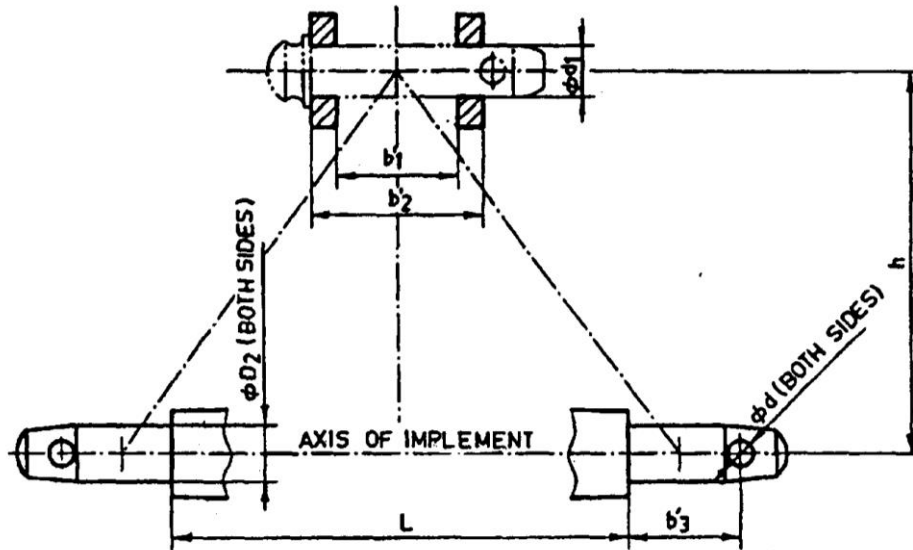


Fig. : Implement Hitch Attachment

6.0	Overall dimensions (mm)	
	Length x Width x Height	
7.0	Mass of implement (kg)	
8.0	Colour	
9.0	Other specific details, if any	

Place:

Date:

Signature : _____

Name : _____

Designation: _____