



**Farm Machinery Testing and Training Centre**  
**Department of Farm Power and Machinery**  
**College of Agricultural Engineering and Technology**  
**DR. PANJABRAO DESHMUKH KRISHI VIDYAPEETH**  
**AKOLA- 444 104 (MS)**



*E-mail: [fmtt28@gmail.com](mailto:fmtt28@gmail.com)*

**Specification sheet for Disc plough**

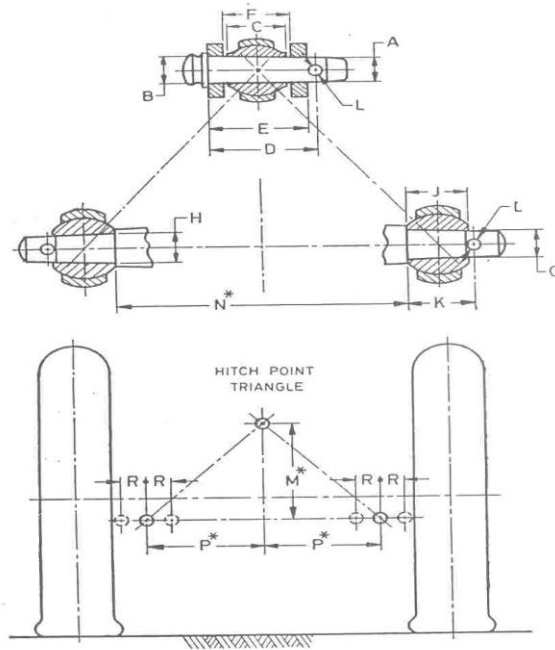
<b>1</b>	<b>General</b>		
	Name and address of manufacturer	:	
	Name and address of applicant	:	
	Name of machine	:	
	Type	:	
	Make	:	
	Model	:	
	Serial No	:	
	Size of plough, mm	:	
	Year of Manufacture	:	
<b>2</b>	<b>Recommended Source of Power</b>		
	Power source in range, kW	:	
<b>3</b>	<b>Frame</b>		
<b>i)</b>	Constructional details	:	
<b>ii)</b>	Fitting of standard	:	

<b>4</b>	<b>Standard</b>		
	Numbers	:	
	Material	:	
	Size, mm		
	Total length	:	
	Cross section	:	
	Height	:	
	For fixing to main frame chassis	:	
	Method of fixing	:	
<b>5</b>	<b>Disc flange</b>		
	Numbers	:	
	Material	:	
	Number and type of bearing on each flange	:	
	Provision for lubrication	:	
	Number of holes on each flange for attaching disc, mm	:	
	No.	:	
	Diameter		
<b>6</b>	<b>Disc</b>		
	Numbers	:	
	Types	:	
	Material	:	
	Trade mark	:	
	Nominal size, mm	:	
	Overall thickness, mm	:	

	Disc angle, degree	:	
	Tilt angle, degree	:	
	Provision for width of cut adjustment	:	
	No. of fixing holes on each disc		
	Size of centre hole, mm		
	Size of fixing holes (on top round followed by square shape), mm	:	
	Method of fixing	:	
<b>7</b>	<b>Furrow wheel</b>		
	Number	:	
	Location	:	
	Trade mark	:	
	Method of fixing of furrow wheel	:	
	Thickness at bevelled edge, mm	:	
	Width of bevelled edge, mm	:	
	Beveled angle, degree	:	
	Dimensions of axle shaft, mm		
	Diameter	:	
	Length	:	
	Number and type of bearing	:	
	Bearing No.	:	
	Number of spring	:	
	No of coils	:	
	Dia. of spring	:	
	Length of spring, mm	:	

8	Scrapper				
	Shape	:			
	Size (L x B x T), mm	:			
	Material of construction	:			
	Method of fixing	:			
9	Hitch pyramid				
	Type	:			
	Shape	:			
	Material of construction	:			
	Constructional details	:			
	Sr. No.	Notations	As per IS:4468-2001 (Cat-I/Cat-II), mm	As measured, mm	Remarks
	I	Upper hitch point			
	a)	Diameter of hitch pin (A)	18.92 to 19.00/ 25.37 to 25.50		
	b)	Diameter of hitch pin hole (B)	19.3 to 19.5/ 25.70 to 25.91		
	c)	Linch pin hole distance (D)	76/93 (Min.)		
	d)	Width between outer faces of yoke (E)	69/86 (Max.)		
	e)	Width between inner faces of yoke (F)	44.5/52 (min)		
	II	Lower hitch points			
	a)	Diameter of hitch pin	21.80 to 22.01/ 27.8 to 28.0		
	b)	Diameter of hitch pin hole (H)	22.40 to 22.65/ 28.70 to 29.00		
	c)	Linch pin hole distance (K)	39/49 (Min.)		

<b>III</b>	<b>Diameter of linch pin hole</b>			
a)	Upper hitch pin (L)	12/12 (min.)		
b)	Lower hitch pin (L)	12/12 (min.)		
<b>IV</b>	<b>Mast height (M)</b>	458.5 to 461.5/ 608.5 to 611.5		
<b>V</b>	<b>Lower hitch point spans (N)</b>	681.5 to 684.5/ 823.5 to 826.5		



**Fig. 1 Specifications of hitch pyramid**

<b>10</b>	<b>Bearing</b>		
	Type	:	
	Size, mm	:	
	Whether fitted with oil seal	:	
<b>11</b>	<b>Lubrication</b>		
	Type	:	
	Recommended lubricant	:	
	Recommended periodicity	:	
<b>12</b>	<b>Cross Shaft</b>		
	Size, (L x B x T)	:	

	Range of side adjustment	:	
<b>13</b>	<b>Adjustment</b>		
	Angling adjustment	:	
	Height adjustment	:	
<b>14</b>	<b>Accessories</b>		
	Scraper	:	
	Gauge wheel	:	
	Loading platform	:	
<b>15</b>	<b>Overall dimensions, (Lx Bx H) mm</b>		
<b>16</b>	<b>Mass, kg</b>	:	
<b>17</b>	<b>Colour of implement</b>	:	

Place:

Date:

Signature: —————

Name: —————

Designation: —————